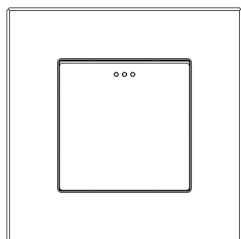


Mechanical Switch Socket

User Manual



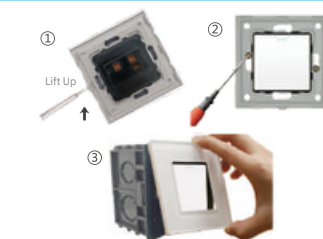
Attention

- Take Off The Switch Cover Frame Connect
- The Device In Accordance With The Relevant Diagrams Insert The Device With
- The Mounting Frame Bracket Into The Mounted Box Ensure No Bare Wires From
- The Terminals Push The Cover Frame To The Device
- Screw The Device Carefully
- Switch On The Main Supply
- For Indoors,Use In Dry Area Only

Caution:Electrical Devices Should Be Mounted And Connected By A Qualified Electrician

Wall Installing Boxes:

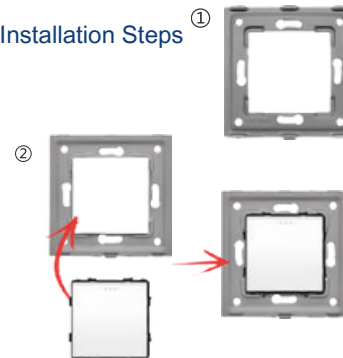
① Ø = 76mm, Width 71mm, Depth 64mm



Fixed Installation Methods

- ① Place A Screwdriver Into The Short Slot And Gently Lift Up Until Release
- ② Screw To Fix The Switch To The Wall Mounted Box
- ③ Push The Front Frame Into The Installed Device Carefully

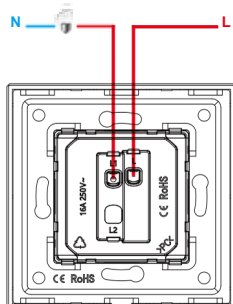
Installation Steps



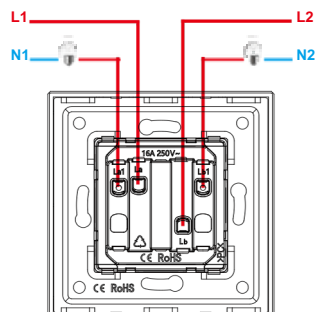
Switch Appearance

	White	Black	Gold	Grey
1 Gang 1/2/3 Way				
2 Gang 1/2/3 Way				
3 Gang 1/2 Way				
4 Gang 1/2 Way				

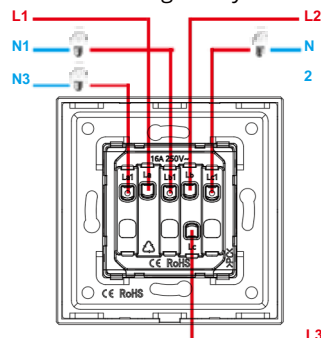
1 Gang 1 Way



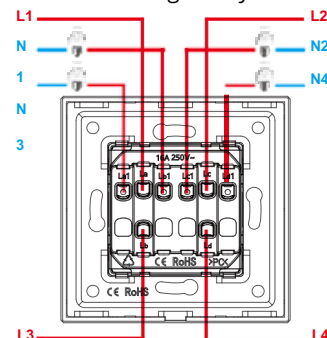
2 Gang 1 Way



3 Gang 1 Way



4 Gang 1 Way



Limited Warranty

The limited warranty does not cover any failures and operating difficulties due to abuse, misuse, alteration, misapplication, improper installation, and maintenance service by you or any third party.

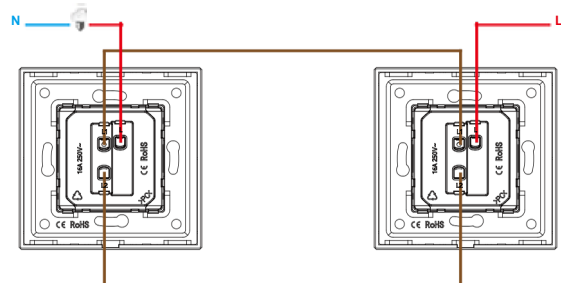
The limited warranty does not cover damages to the finish, such as scratches, dents, discoloration or rust after purchase.

Caution:Electrical Devices Should Be Mounted And Connected By A Qualified Electrician

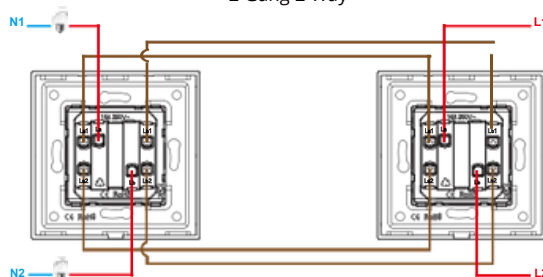
Warning:Don't Install Device Directly To Freshly Plastered Wall ,It May Get Tarnished

Our Mission Is To Provide You The Best Smart Devices Ever !

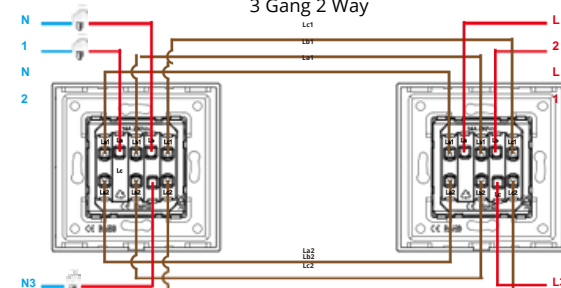
1 Gang 2 Way



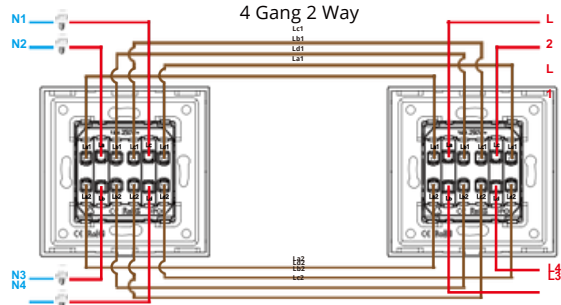
2 Gang 2 Way



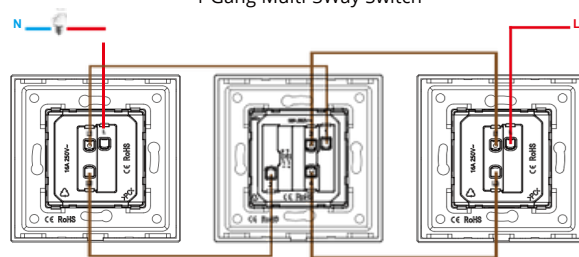
3 Gang 2 Way



4 Gang 2 Way



1 Gang Multi-3Way Switch



2 Gang Multi-3Way Switch

