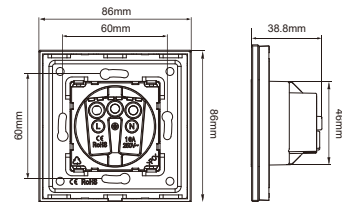


1. Technical Data

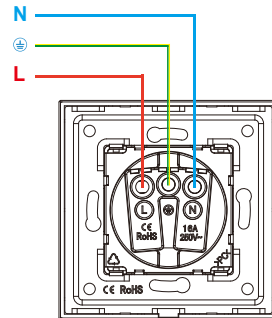
Current:	16A
Power:	5~3000W
Material:	PC+Crystal Toughed Glass
Working Voltage:	110 V-250 V
Relative Humidity:	10% ~ 93%
Working Temperature:	-30 °C~+70°C



2. Attention

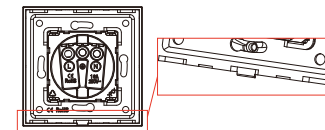
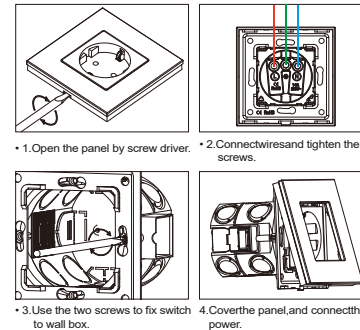
• Never try to install the socket yourself. Have the installation carried out only by a trained specialist. The cables of the socket must be connected exactly as shown in the following diagram.

Warning: Ensure that all cables are sufficiently insulated. Make sure that no voltage is applied and that the electrical current is switched off as a result of removing the fuse.



• Before the switch can be installed, the fuse must be removed so that no current can flow.

3. Installation Diagram



• Make sure that the panel is pressed against the housing facing the right direction. Now the fuse can be switched on again.

4. Notes

- Protect the device from humidity and moisture.
- Do not use the device near water.
- Avoid blows and drops.
- Do not try to modify the unit or to repair it by yourself.
- Only clean with a dry or slightly damp cloth. Do not use chemical substances.